

Parents' directory of services

Organisations providing support to parents of disabled children in England & Wales.

Please note that this directory is just for information; Scope do not endorse any of these organisations.

COVID-19 notice: During the pandemic, many organisations have had to suspend some, or part of their service. Please check the individual websites for up-to-date information

General

- Action for Children
www.actionforchildren.org.uk/how-to-help/volunteer-with-us/parent-champions/
- Barnardo's
<http://www.barnardos.org.uk>
- Caudwell Children
www.caudwellchildren.com
- Citizens Advice
www.citizensadvice.org.uk
- Council for Disabled Children
<https://councilfordisabledchildren.org.uk/>
- Disability Alliance UK
www.disabilityrights.org
- Early Years Learning Alliance (supporting children in early education)
www.eyalliance.org.uk
- Families and Childcare Trust (FCT)
www.familyandchildcaretrust.org

- Family Action
www.family-action.org.uk
- Family First
www.familyfirst.net
- Family Fund
www.familyfund.org.uk
- KIDS
www.kids.org.uk/parent-family-support
- I CAN (Invalid Children Aid Nationwide)
www.ican.org.uk
- Mencap
www.mencap.org.uk/familyhub
- Motability
www.motability.co.uk
- The National Network of Parent Carer Forums
www.nnpcf.org.uk
- Parents for Inclusion
councilfordisabledchildren.org.uk/members/meet-our-members/parents-inclusion
- Special Needs Jungle
www.specialneedsjungle.com
- SWAN UK (Syndromes without A Name UK)
www.undiagnosed.org.uk



Single parents

- Gingerbread
www.gingerbread.org.uk

Adoption

- Family Futures
www.familyfutures.co.uk/adoption-support/parent-mentoring/

Education

- Centre for Studies on Inclusive Education (CSIE)
www.csie.org.uk
- IPSEA (Independent Panel for Special Educational Advice)
www.ipsea.org.uk
- National Association of Special Educational Needs
www.nasen.org.uk

Young people

- NSPCC National Society for the Prevention of Cruelty to Children
www.nspcc.org.uk
- SKILL (National Bureau for Students with Disabilities)
www.skill.org.uk
- Young Minds
<https://youngminds.org.uk/>

Conditions

ADHD

- ADHD
www.adhdfoundation.org.uk

Autism spectrum

- Child Autism UK
www.childautism.org.uk/
- National Autistic Society
www.autism.org.uk

Complex needs

- Sense
www.sense.org.uk

Down's Syndrome

- Down's Syndrome
www.downs-syndrome.org.uk

Dyslexia

- British Dyslexia
www.bdadyslexia.org.uk
- Dyslexia Action
<https://dyslexiaaction.org.uk/>

Eating disorders

- ABC (Anorexia and Bulimia Care)
www.anorexiabulimiacare.org.uk/online_community



Hearing impairment

- British Deaf Association
www.bda.org.uk
- National Deaf Children's Society
<https://www.ndcs.org.uk/>
- The Elizabeth Foundation
www.elizabeth-foundation.org

Medical conditions

- Crohn's and Colitis UK
www.crohnsandcolitis.org.uk/
- Cystic Fibrosis
www.cysticfibrosis.org.uk/
- Diabetes UK
www.diabetes.org.uk/
- Epilepsy Action
www.epilepsy.org.uk/
- Haemophilia Society
www.haemophilia.org.uk
- Leukaemia Care
www.leukaemiacare.org.uk
- National Asthma UK
www.asthma.org.uk/
- National Eczema Society
eczema.org/
- National Society for Epilepsy
www.epilepsysociety.org.uk

- Sickle Cell Society
www.sicklecellsociety.org

Mental health

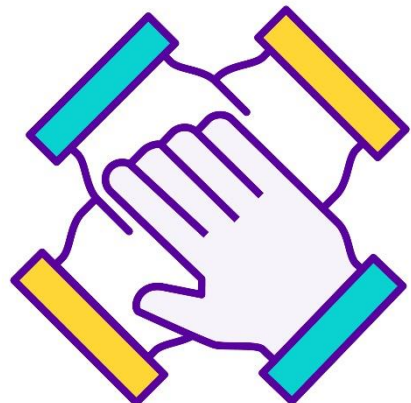
- Mind
www.mind.org.uk/information-support/

Neurological conditions

- Angelman Syndrome
www.angelmanuk.org
- Ataxia UK
www.ataxia.org.uk
- Headway National Head Injuries Association
www.headway.org.uk
- Huntington's Disease Association
www.hda.org.uk
- Stroke Association
www.stroke.org.uk/childhood-stroke

Physical disability

- Spina Bifida Association
<https://www.spinabifidaassociation.org/>
- Brittle Bone Society
brittlebone.org/
- Dyspraxia Foundation
dyspraxiafoundation.org.uk/
- Hemiplegia Awareness
www.hemichat.org



- Muscular Dystrophy
www.musculardystrophyuk.org/
- Spinal Injuries Association
www.spinal.co.uk

Premature babies

- Bliss
www.bliss.org.uk/

Speech and language

- AFASIC – voice for life
www.afasic.org.uk/

Visual impairment

- LOOK (National Federation of Families with Visually Impaired Children)
www.look-uk.org
- National Blind Children's Society
www.blindchildrenuk.org
- National Federation of the Blind
www.nfbuk.org
- RNIB (Royal National Institute of Blind People)
www.rnib.org.uk

Sleep services

- Scope
www.scope.org.uk/child-sleep-services/sleep-right
- Cerebra
<https://cerebra.org.uk/get-advice-support/sleep-advice-service/>

- Contact (formerly Contact a Family)
contact.org.uk/
- Family Lives
www.familylives.org.uk
- Friendship Circle
<http://www.friendshipcircle.org>



Read Scope online community member Emma Sterland's [30 tips to a good night's sleep for children with special needs](#).

- National Deaf Children's Society
www.ndcs.org.uk
- Together Trust
www.togethertrust.org.uk/search/site/sleep

Parenting classes

- Family Lives
www.familylives.org.uk/how-we-can-help/online-parenting-courses/parents-together/
- National Autistic Society (NAS)
www.autism.org.uk/earlybird
- Netmums
www.netmums.com/support/netmums-parenting-course
- Of Course *
www.ofcourse.co.uk/course/special-educational-needs--disabilities-send-bundle

* Please note that some of these courses charge a fee.